



2020 LED LIGHTING

SPRING EDITION

CATALOG

Company Profile

Fireflier Lighting Limited was started 10 years ago, by Jorge Wong who has been in the lighting field for past two decades. Jorge, who has been manufacturing and researching lighting products from the early 1990's aims to provide the right product to our clients under the company Fireflier Lighting.

Located in the LED producing&researching center, Fireflier is not only a manufacturer, but also a designer. Most of products are designed by Fireflier's engineers. The LED High Mast Lighting and LED High Bay Lights are widely used in the market.

High efficiency production lines, leading technology of LED, excellent and experienced LED engineers and employees, and also 100% satisfied customer service ensures our LED product with high quality and latest design. The production strictly carry out ISO9001 International Quality Certification System and ISO14001 International Environment Certification System.

Based on above, Fireflier aim to produce the right product with best price required by our client in this complicated lighting area. Europe, North America, Australia and also Latin America are our main market.

All in all, Fireflier hope to work with all our friends from the whole world in the LED lighting field and make a contribution to the green earth.

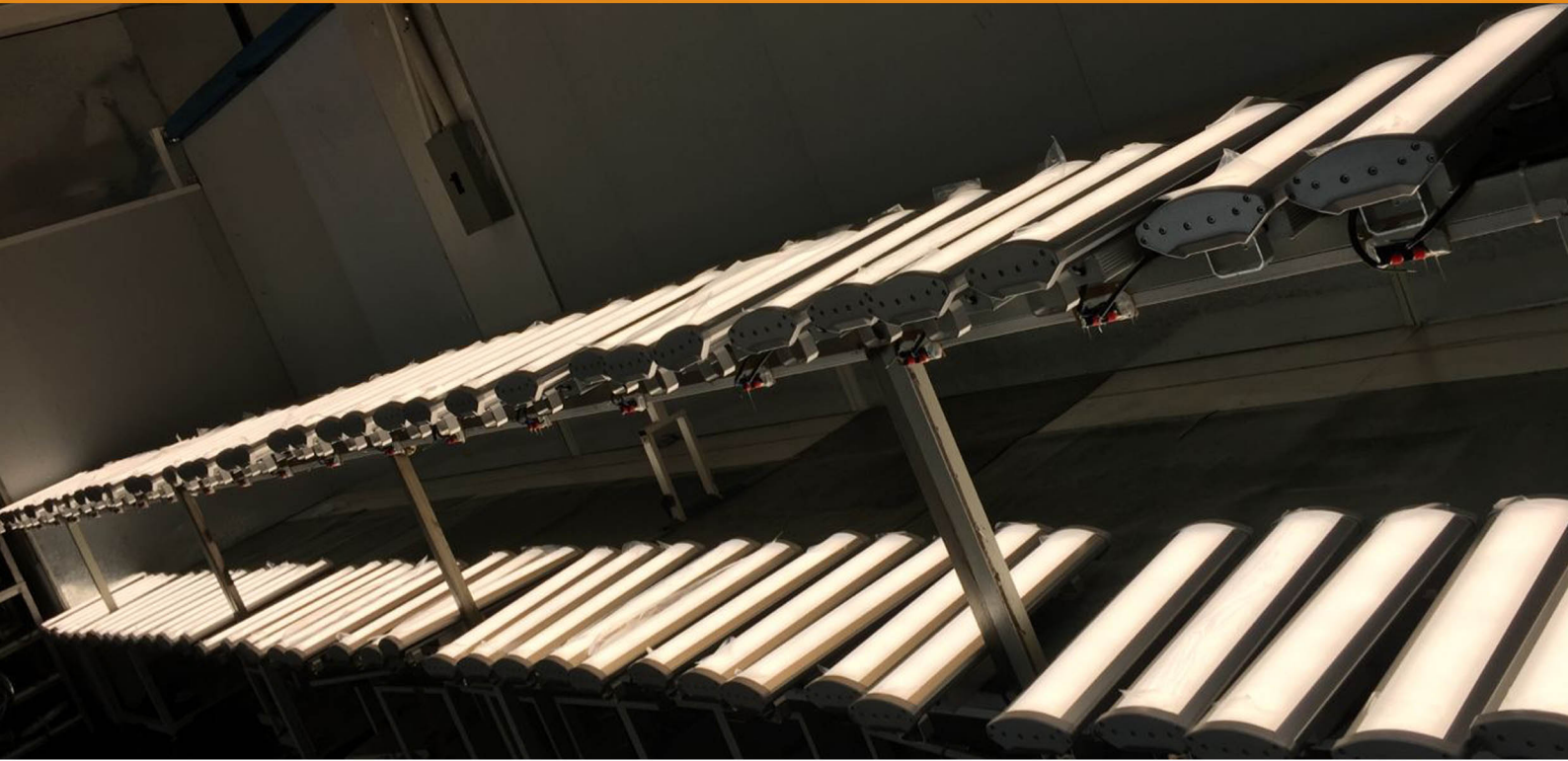
Welcome to Fireflyer Lighting



our certifications



Aging Test Reference



Contents

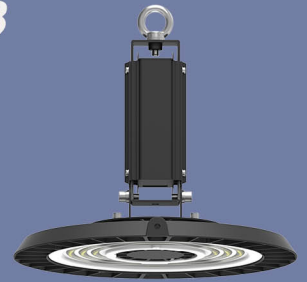
1



2



3



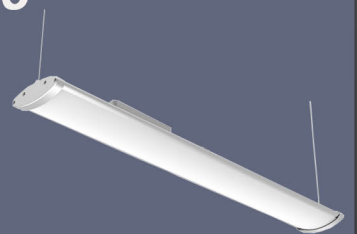
4



5



6



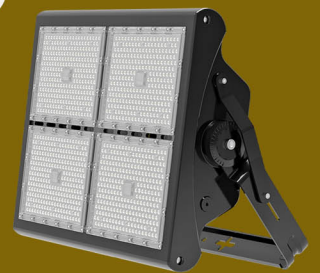
7



8



9



10



11



13





Crown High Bay Light



150/190 lm/w

Model	FR-EHBL80W	FR-EHBL100W	FR-EHBL150W	FR-EHBL200W
Wattage	80W	100W	150W	200W
Lumen	12000LM	14500LM	21750LM	29000LM
Size(mm)	292(D)*151(H)		342(D)*157(H)	382(D)*160(H)
Weight	2.78KGS		3.35KGS	4.0KGS
Light Source	CREE LED			
Color temperature	2700-6500K			
Power Factor	0.95			
Input Voltage	AC90-305V/AC200-480V			
Beam angle	60°/90°/120°			
IP & IK	IP65 & IK10			
Dimmable	1-10V/Dali dimming (Optional)			
Color rendering	>80 or 70			
Finish	Aluminum+PC lens			
Lifespan	50,000 Hours			
Certification	ETL SAA CB CE(EMC LVD) ROHS			
Warranty	5 YEARS			

- Back smooth design
- Patented optical lens
- Hanging/mounted installation
- 60°/90°/120° lens
- Light weight design
- Built-in sensor
- AC200-480V optional
- 1-10V/Dali Dimming



Crown High Bay Light is with updated smooth back design. This new version is much lighter weight than previous types. Besides, a built-in Microwave sensor&Daylight sensor are provided for more energy-saving.



Ripple High Bay Light



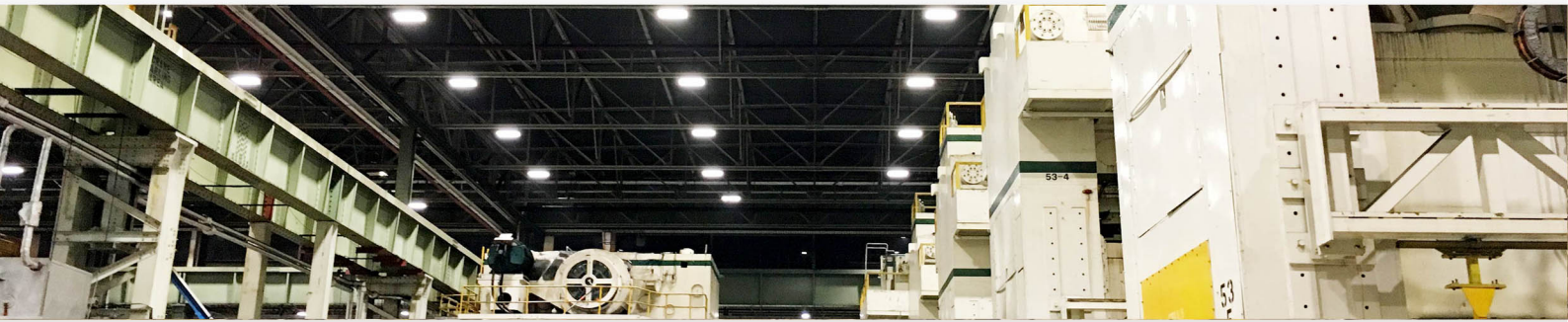
150lm/w

Model	FR-HBL100W	FR-HBL150W	FR-HBL200W	FR-HBL240W
Wattage	100W	150W	200W	240W
Lumen	15000LM	22500LM	28000LM	33000LM
Size(mm)	261(D)*172(H)	300(D)*190(H)	330(D)*201(H)	
Weight	2.9KGS	3.9KGS	5.7KGS	
Light Source	Nichia/Lumileds LED			
Color temperature	2700-6500K			
Power Factor	0.95			
Input Voltage	AC90-305V/AC200-480V			
Beam angle	60°/90°/120°			
IP & IK	IP65 & IK10			
Dimmable	0-10V/Dali dimming (Optional)			
Color rendering	>80 or 70			
Finish	Aluminum+PC lens			
Lifespan	50,000 Hours			
Certification	ETL SAA CB CE(EMC LVD) ROHS			
Warranty	5 YEARS			

- 1st lamp with ripple lens
- Patented optical lens
- Hanging/mounted installation
- 60°/90°/120° lens
- Aluminum/PC reflector optional
- AC200-480V optional
- 1-10V/Dali Dimming



Ripple series is our first version of UFO High Bay Lights. It is the first high bay lamp adopted with ripple lens in the market. Aluminum or PC reflector is available also.



High Temperature High Bay Light



150lm/w

Model	FR-SHBL100W	FR-SHBL150W
Wattage	100W	150W
Lumen	15000LM	22500LM
Size(mm)	345*345*308mm	385*385*308mm
Weight	3.35KGS	4KGS
Light Source	CREE/LUMILEDS 3030	
Color temperature	2700-6500K	
Power Factor	0.95	
Input Voltage	AC200-240V	
Beam angle	60°/90°/120°	
IP & IK	IP65 & IK08	
Dimmable	1-10V (Optional)	
Color rendering	>80 or 70	
Finish	Aluminum+PC lens	
Lifespan	50,000 Hours	
Certification	CE(EMC LVD) ROHS	
Warranty	5 YEARS	

- Up to 65° ambient temperature
- Patented optical lens
- Hanging installation
- 60°/90°/120° lens
- Easy cleaning
- IP65 Grade
- 1-10V Dimming



SHBL High Bay Light is designed with separate driver&heat sink to work in a maximum 65° environment. It is a perfect solution for high temperature area. 1-10V dimming is available for more energy saving.



Avenir High Bay Light



150lm/w

Model	FR-CHBL100W	FR-CHBL120W	FR-CHBL150W
Wattage	100W	120W	150W
Lumen	15000LM	18000LM	22500LM
Size(mm)	400(D)*197(H)		
Weight	5.8KGS		
Light Source	CREE LED		
Color temperature	2700-6500K		
Power Factor	0.95		
Input Voltage	AC90-305V/AC200-480V		
Beam angle	60°/90°/120°		
IP & IK	IP69K & IK10		
Dimmable	1-10V/Dali dimming (Optional)		
Color rendering	>80 or 70		
Finish	Aluminum+PC lens		
Lifespan	50,000 Hours		
Certification	ETL C-TICK CE(EMC LVD) ROHS		
Warranty	5 YEARS		

- Smooth&screwless design
- Patented optical lens
- Hanging installation
- 60°/90°/120° lens
- Easy cleaning
- IP69K Grade
- AC200-480V optional
- 1-10V/Dali Dimming



Avenir High Bay Light is with smooth&screwless surface design. It is a perfect light for food processing rooms and other dust-free area. 1-10V/Dali dimming is available for more energy saving.



E40

High Bay Light



140lm/w

Model	BUH-150	BUH-200
Wattage	150W	200W
Lumen	20000LM	27000LM
Replace(MH/HPS)	400-500W	500-600W
Weight	1.8KGS	
Light Source	Lumileds	
Color temperature	2700-6500K	
IP Grade	IP65	
Input Voltage	AC100-277V	
Beam Angle	60°/90°/120°	
Dimmable	1-10V PWM	
Base	E39/E40/Hook	
Color rendering	>80	
Accessory	Hook, Microwave sensor	
Lifespan	50,000 Hours	
	ETL DLC CE(EMC LVD) ROHS	
Warranty	5 YEARS	

- Up to 140lm/w
- 60°/90°/120° lens
- Internal driver
- E39/40/Hook installation
- Light&elegant design
- 1-10V/PWM Dimming
- IP65 Waterproof



Up to 140lm/w, the E40 150W&200W are perfect replacement of metal halide, HPS and other conventional bulbs. It is integrated with many features, including: IP65 waterproof, dimming, mogul base/hook installation and various beam angle.



Angel Low Bay Light



120lm/w

Model	FR-LB100-C	FR-LB120-C	FR-LB150-C	FR-LB200-C
Wattage	100W	120W	150W	200W
Lumen	12000LM	14400LM	18000LM	24000LM
Size	1200*130*55		1500*150*67	
Weight	6.0KGS		7.0KGS	
Light Source	2835 SMD			
Color temperature	2700-6500K			
Power Factor	0.95			
Input Voltage	AC100-277V			
IP Grade	IP65			
Installation	Mounted/Suspended			
Dimmable	1-10V/Dali optional			
Color rendering	>80			
Finish	Aluminum+PC			
Lifespan	50,000 Hours			
Certification	CE(EMC LVD) ROHS			
Warranty	5 YEARS			

- Light&elegant design
- IP65 Waterproof
- Milky&clear cover
- 1-10V/Dali dimming
- Emergency mode available
- Hanging&Mounted installation
- Microwave sensor optional



Angel Led Low Bay Light is brilliantly designed as a one-for-one replacement to traditional High Bays. With nice looking, and better lighting performance, make it be more and more popular in the market.



Pilot Flood Light



130lm/w

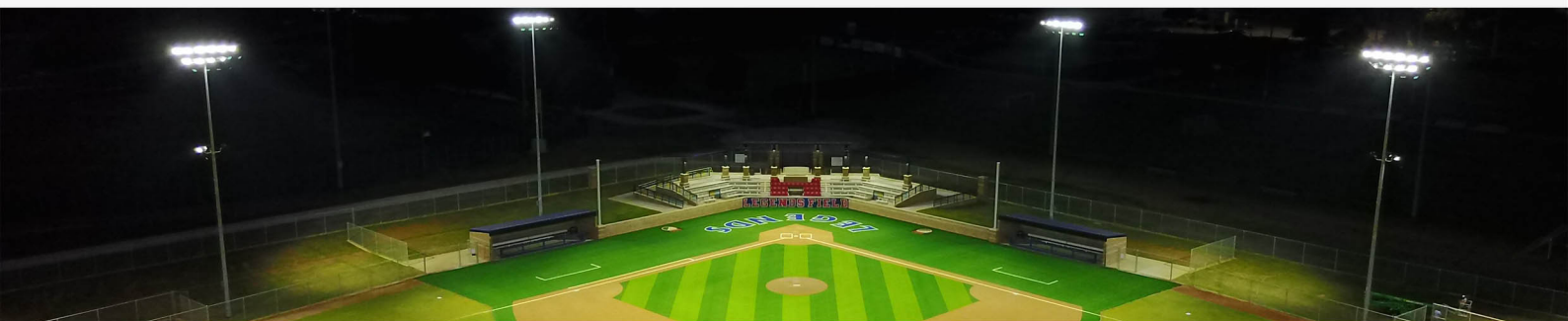
Model	FR-FLN100	FR-FLN150	FR-FLN200	FR-FLN320
Wattage	100W	150W	200W	320W
Lumen	13000LM	20000LM	26000LM	42000LM
Size(mm)	389*301*57	437*346*57	493*383*57	582*440*57
Weight	4.2KGS	5.4KGS	6.5KGS	10.2KGS
Light Source	Lumileds 3030			
Color temperature	2700-6500K			
Power Factor	0.95			
Input Voltage	AC100-277V/AC200-480V			
Beam angle	30°/60°/90° / 120°/TYPE 2/TYPE 3			
IP & SPD	IP66 & 10KV			
Dimmable	0-10V/Dali dimming (Optional)			
Color rendering	>80 or 70			
Finish	Aluminum+PC lens			
Lifespan	50,000 Hours			
Certification	CE(EMC LVD) ROHS			
Warranty	5 YEARS			

- Streamline body design
- Tempered glass cover
- Isolated driver box
- Various beam angle
- High lumen output 130lm/w
- AC200-480V optional
- 0-10V/Dali Dimming

INVENTRONICS

LUMILEDS

Pilot LED flood light is with streamline body and multi-angle lens design. Available with symmetric&asymmetric lens, almost all applications covered, like recreational sports, building lighting...etc.



Manta High Mast Light



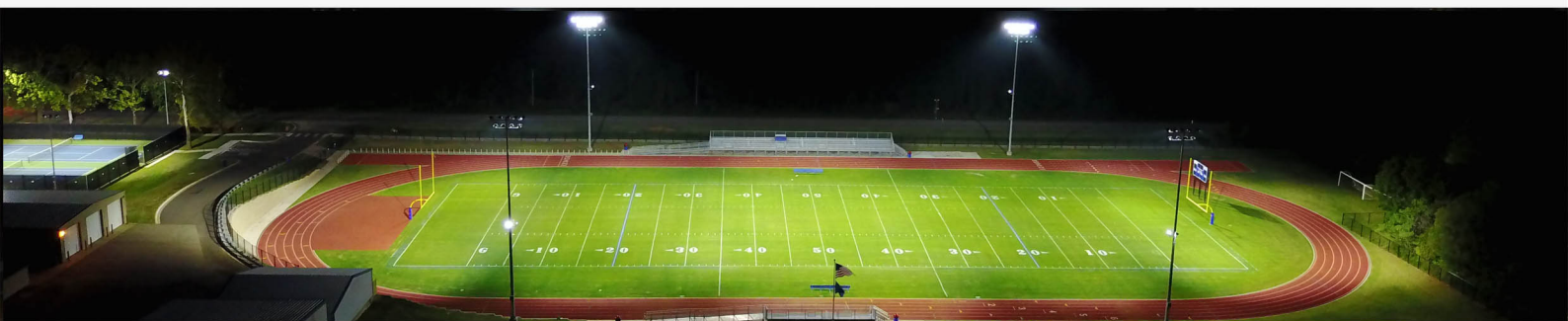
150lm/w

Model	FR-MHL240W	FR-MHL480W	FR-MHL960W
Wattage	240W	480W	960W
Lumen	35000LM	70000LM	140000LM
Size(mm)	371*368*80	660*393*86	660*704*86
Weight	6.2KGS	13.5KGS	25KGS
Light Source	LUMILEDS 5050/3030		
Color temperature	2700-6500K		
Power Factor	0.95		
Input Voltage	AC100-277V		
Beam angle	20°/40°/60°/90°/120°/140°/100°		
IP & IK	IP65 & IK10		
Dimmable	1-10V dimming (Optional)		
Color rendering	>80 or 70		
Finish	Aluminum+PC lens		
Lifespan	50,000 Hours		
Certification	CE(EMC LVD) ROHS		
Warranty	5 YEARS		

- Anti-glare design
- Various beam angles
- Bracket/Pole installation
- Excellent thermal management
- Free maintenance
- IP65 & IK10
- Chlorine resistant treated gasket
- Meanwell/Inventronics driver



Manta High Mast Light is designed for high mounting application, such as large soccer field, large plazas. 480W/ 960W with small beam angle could positioning certain area, to minimise glare and control the uniformity.



Beacon High Mast Light



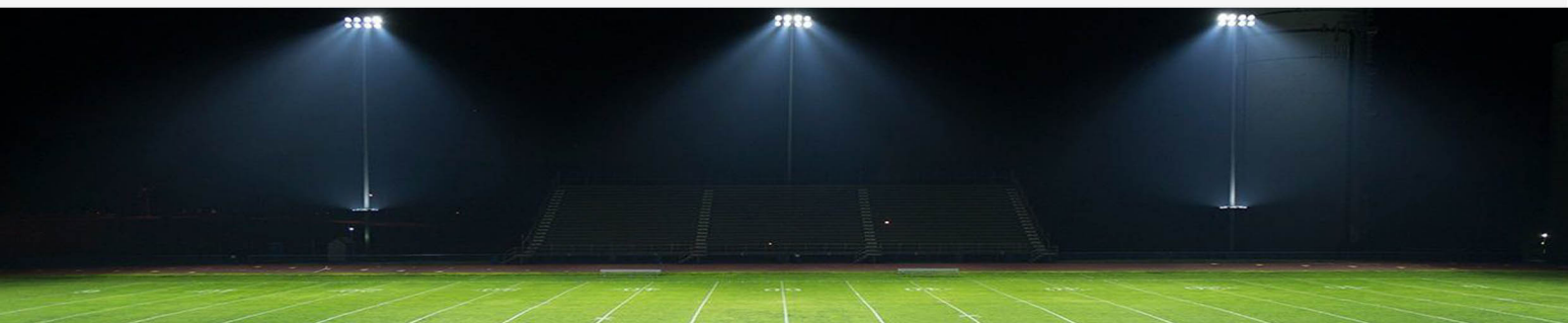
130lm/w

Model	FR-BST480W	FR-BST960W	FR-BST1440W
Wattage	480W	960W	1440W
Lumen	65000LM	130000LM	185000LM
Size(mm)	325*428*141	629*486*160	889*486*160
Weight	15KGS	26KGS	37KGS
Light Source	LUMILEDS 3030		
Color temperature	2700-6500K		
Power Factor	0.95		
Input Voltage	AC100-277V		
Beam angle	10°/ 25°/45°/60°/90°		
IP & IK	IP66 & IK10		
SPD	10KV		
Color rendering	>80 or 70		
Finish	Aluminum+PC lens		
Lifespan	50,000 Hours		
Certification	CE(EMC LVD) ROHS		
Warranty	5 YEARS		

- Cold forging AL heat sink
- Various beam angles
- Bracket installation
- Excellent thermal management
- Free maintenance
- IP66 & IK10
- Chlorine resistant treated gasket
- Meanwell driver



Beacon High Mast Light is with up to 1440W power and 140lm/w lumen output. A narrow 10° beam are professional for stadiums, high brightness, and long-distance lighting.



Supra Stadium Light



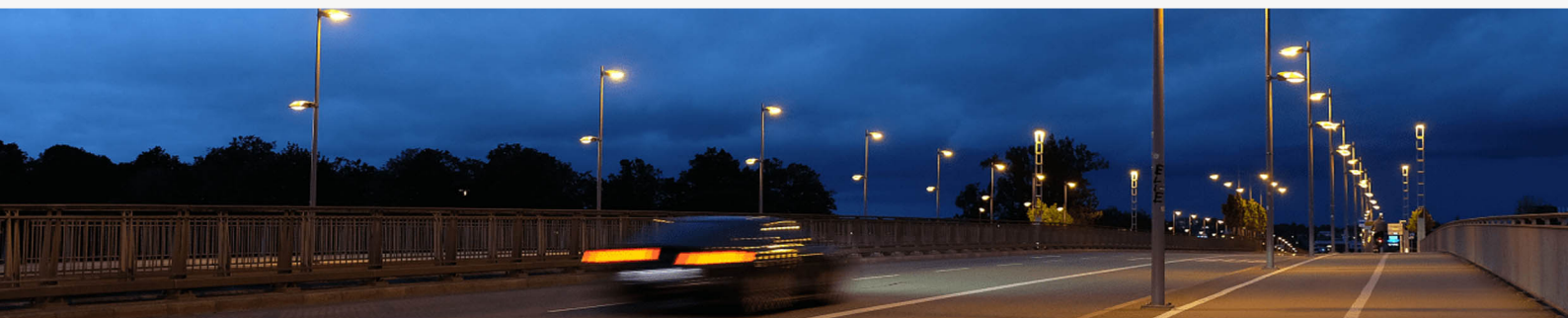
130lm/w

Model	FR-PST400W	FR-PST480W	FR-PST800W	FR-PST960W
Wattage	400W	480W	800W	960W
Lumen	55000LM	66000LM	108000LM	130000LM
Size(mm)	493*439*421		651*586*511	
Weight	16.3KGS		29.4KGS	
Light Source	LUMILEDS 3030			
Color temperature	2700-6500K			
Power Factor	0.95			
Input Voltage	AC100-277V			
Beam angle	10°/ 25°/45°/60°/90°			
IP & IK	IP66 & IK10			
SPD	10KV			
Color rendering	>80 or 70			
Finish	Aluminum+PC lens			
Lifespan	50,000 Hours			
Certification	CE(EMC LVD) ROHS			
Warranty	5 YEARS			

- No Glare, no Up light
- Various beam angles
- Bracket installation
- Excellent thermal management
- Free maintenance
- IP66 & IK10
- Chlorine resistant treated gasket
- Meanwell driver



Supra LED high mast light is the ideal solution for professional outdoor sports lighting. Offering versatility for any outdoor sport including soccer, baseball, lacrosse and golf ,etc.



Retrofit Led Street Light



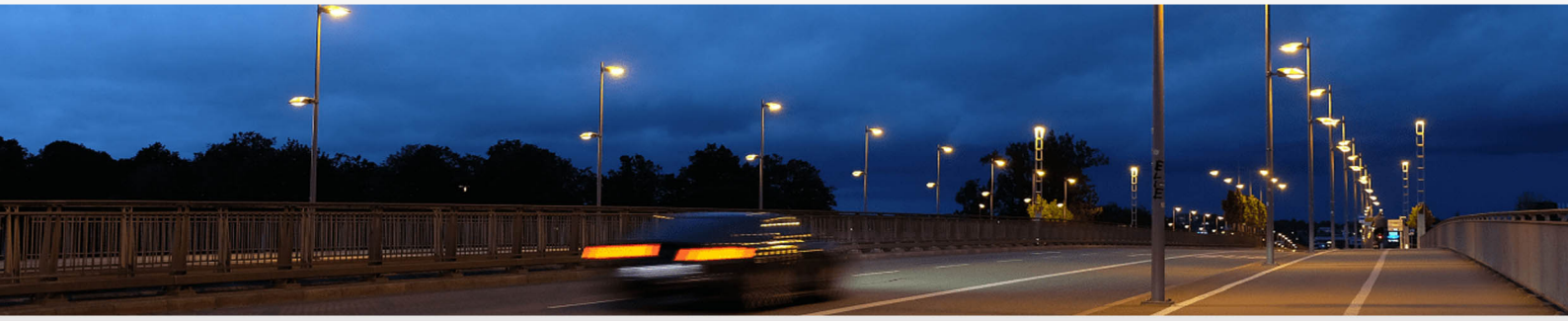
120lm/w

Model	FR-BUS-30	FR-BUS-40	FR-BUS-50	FR-BUS-60
Wattage	30W	40W	50W	60W
Lumen	3600LM	4800LM	6000LM	7800LM
Size	247(L) x 111(W) x 94(H)			
Weight	630G			
Light Source	Lumileds 3030			
Color temperature	2700-6500K			
Power Factor	0.95			
Input Voltage	AC100-277V			
IP Grade	IP51			
Base	E26/E27/E39/E40			
Beam Angle	TYPE III(90°*150°) or TYPE V (150°)			
Color rendering	>80			
Finish	AL Alloy+PC			
Lifespan	50,000 Hours			
Certification	CE(EMC LVD) ROHS			
Warranty	5 YEARS			

- Rotatable lamp base
- Small size&high power
- Fan cooling design
- Internal driver
- Non flickering
- Type III & Type V lens



This BUS Series comes in two different sizes depending on the lumen output required and different lamp power varying from 30w to 150w. It can replace from 100W to a 400W MH. The rotatable lamp base make sure a correct lighting direction.



Retrofit Led Street Light



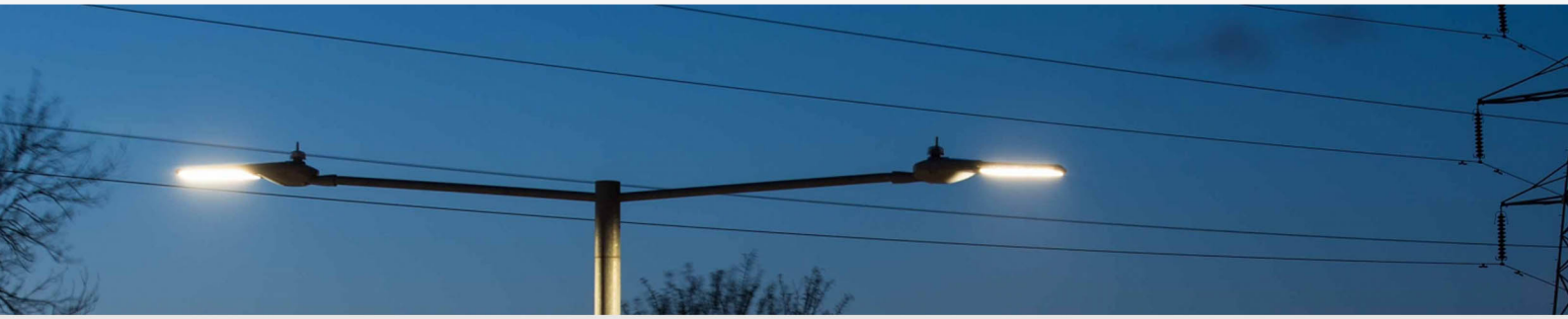
120lm/w

Model	FR-BUS-80	FR-BUS-100	FR-BUS-120	FR-BUS-150
Wattage	80W	100W	120W	150W
Lumen	10000LM	12500LM	15000LM	18750LM
Size	295(L) x 133(W) x 110(H)			
Weight	1020G			
Light Source	Lumileds 3030			
Color temperature	2700-6500K			
Power Factor	0.95			
Input Voltage	AC100-277V			
IP Grade	IP51			
Base	E26/E27/E39/E40			
Beam Angle	TYPE III(90°*150°) or TYPE V (150°)			
Color rendering	>80			
Finish	AL Alloy+PC			
Lifespan	50,000 Hours			
Certification	CE(EMC LVD) ROHS			
Warranty	5 YEARS			

- Rotatable lamp base
- Small size&high power
- Fan cooling design
- Internal driver
- Non flickering
- Type III & Type V lens



This BUS Series comes in two different sizes depending on the lumen output required and different lamp power varying from 30w to 150w. It can replace from 100W to a 400W MH. The rotatable lamp base make sure a correct lighting direction.



Pilot Led Street Light



150lm/w

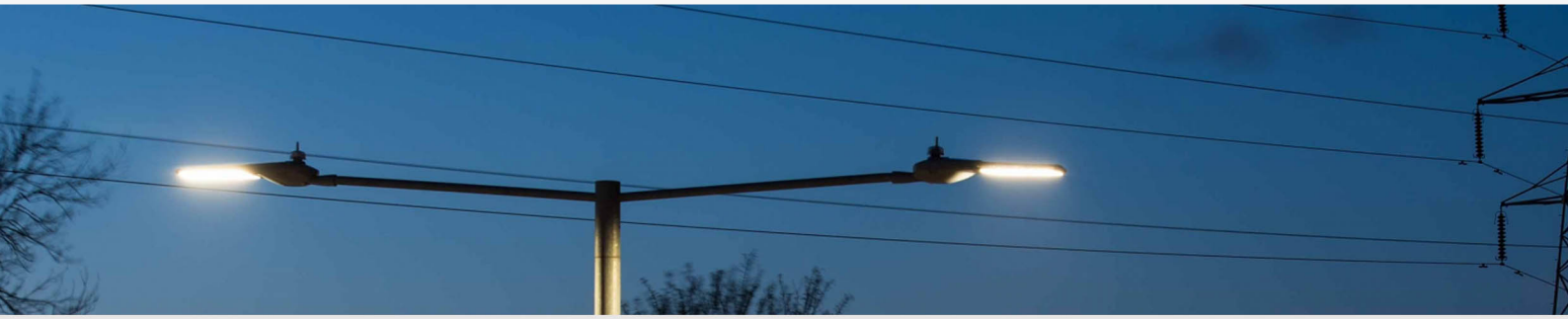
Model	FR-STL30W	FR-STL60W	FR-STL90W	FR-STL120W
Wattage	28W	65W	90W	120W
Lumen	4500LM	9000LM	13500LM	18000LM
Size	562*240*86mm		624*313*106mm	
Weight	4.3KGS		6KGS	
Light Source	Lumileds 3030			
Color temperature	2700-6500K			
Power Factor	0.95			
Input Voltage	AC100-277V			
IP & IK	IP66 & IK08			
Sensor	Photocell			
Beam Angle	TYPE II(ME1~ME2 ME3~ME5 ME3-SE)			
Color rendering	>80 or 70			
Finish	AL+PMMA lens+Tempered Glass cover			
Lifespan	50,000 Hours			
Certification	CE(EMC LVD) ROHS			
Warranty	5 YEARS			

- Streamline design
- Driver box buckle design
- 0-10V/Dali dimming
- Intelligent control
- SPD10KV/20KV
- ME1-ME5 beam angle
- Integrated breather



PHILIPS  **LUMILEDS**

Pilot LED street light is featured by innovative design. The optical lenses and LED chips offer great efficiency both from brightness and energy saving. It is particularly suitable for main roads, secondary roads, highway, parking lot, bridge.



Pilot Led Street Light



150lm/w

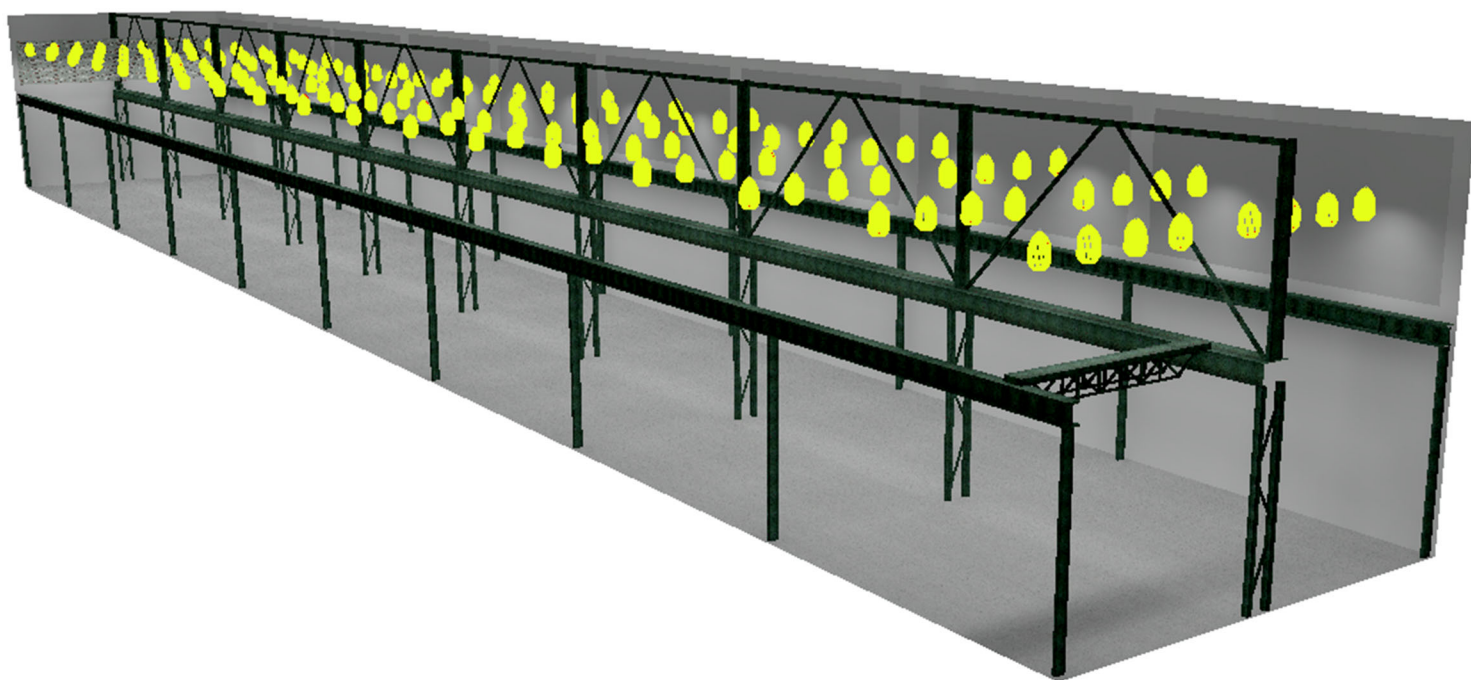
Model	FR-STL150W	FR-STL180W
Wattage	150W	180W
Lumen	22500LM	27000LM
Size	731*312*106mm	
Weight	7.8KGS	
Light Source	Lumileds 3030	
Color temperature	2700-6500K	
Power Factor	0.95	
Input Voltage	AC100-277V	
IP & IK	IP66 & IK08	
Sensor	Photocell	
Beam Angle	TYPE II(ME1~ME2 ME3~ME5 ME3-SE)	
Color rendering	>80 or 70	
Finish	AL+PMMA lens+Tempered Glass cover	
Lifespan	50,000 Hours	
Certification	CE(EMC LVD) ROHS	
Warranty	5 YEARS	

- Streamline design
- Driver box buckle design
- 0-10V/Dali dimming
- Intelligent control
- SPD10KV/20KV
- ME1-ME5 beam angle
- Integrated breather



PHILIPS  **LUMILEDS**

Pilot LED street light is featured by innovative design. The optical lenses and LED chips offer great efficiency both from brightness and energy saving. It is particularly suitable for main roads, secondary roads, highway, parking lot, bridge.



Contact Us

Tel: 86-130-88869086

Web: www.fireflyer.com

Email: info@fireflyer.com

Add: Pingshan, SZ, China

* Because Fireflyer is continually improving its products, specifications are subject to change without notice.